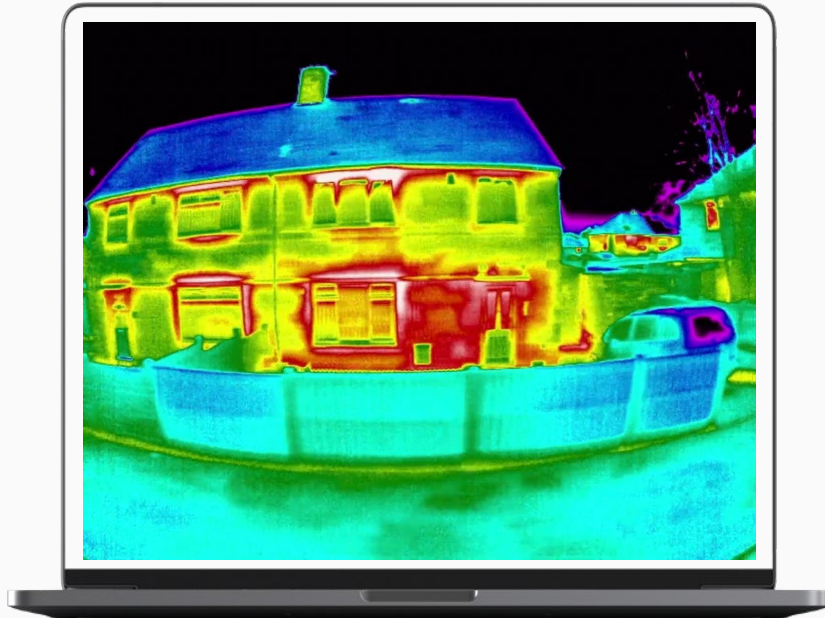


SKILLED MAPPING

OUR INNOVATION

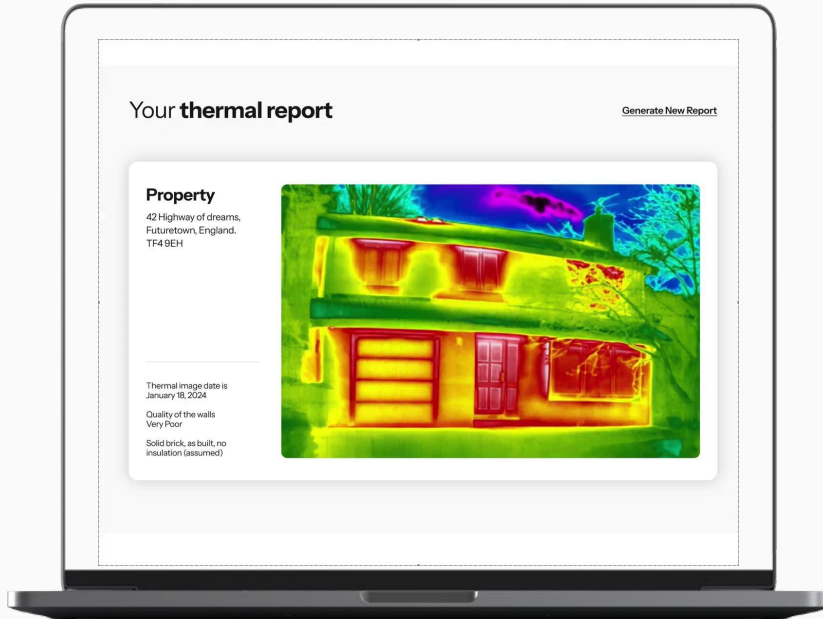
Thermal mobile mapping supporting cities

Step 1: Capture



We carry out thermal captures at the city-scale, thanks to our proprietary mobile mapping system.

Step 2 : AI analysis



We then detect insulation defects on building and recommend priority renovations

Results can be provided as individual reports or maps



Example



WHARM PROJECT

Waste Heat Assessment and Resource Mapping

WHARM



EST 1892
LSBU
Project lead




Aston University
BIRMINGHAM UK
Stakeholder engagement lead




STAR
REFRIGERATION
Industrial support



 | Birmingham
City Council
Local engagement support

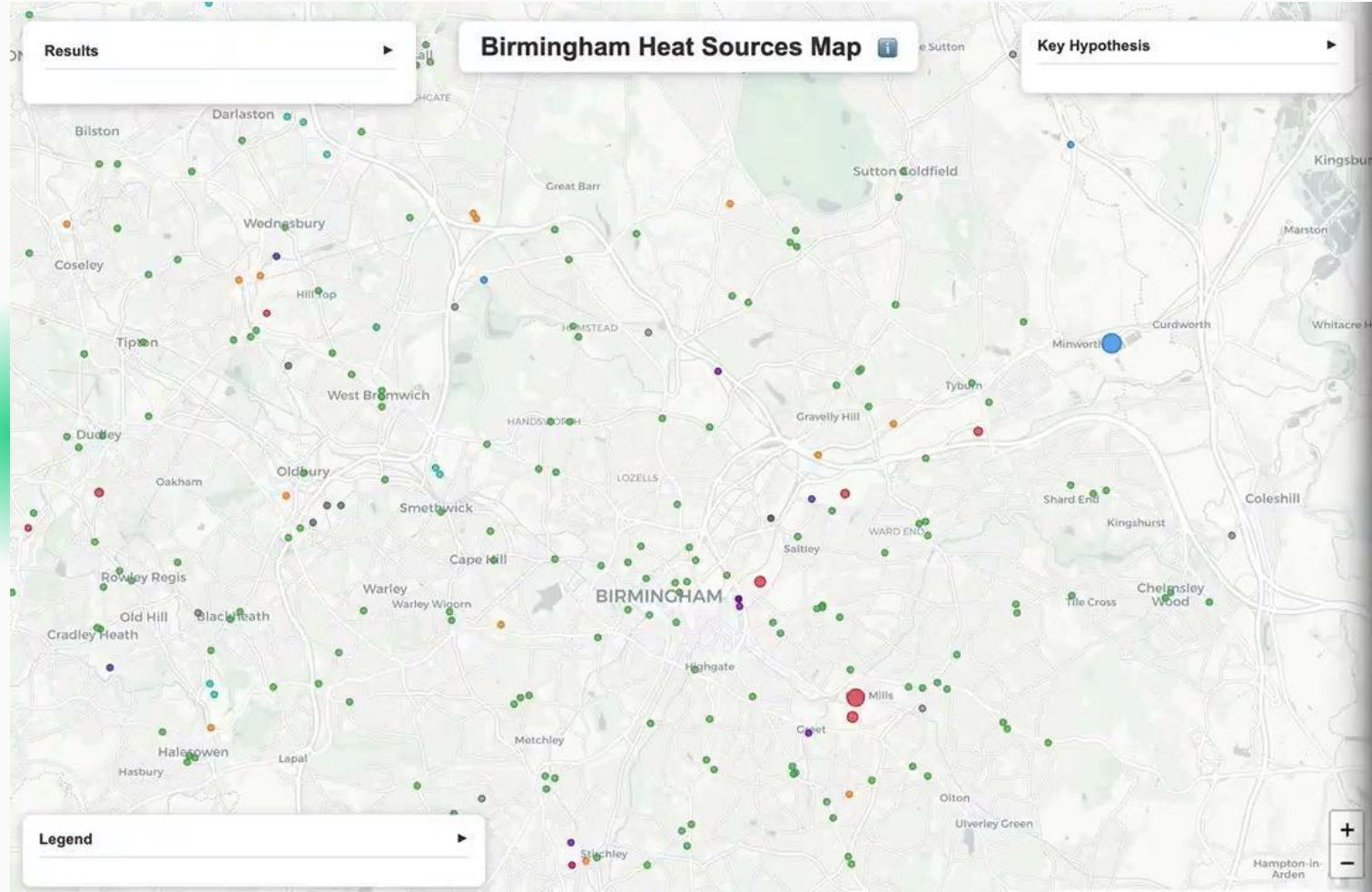
Research project

- Identifying heat sources
- In West Midlands Conurbation

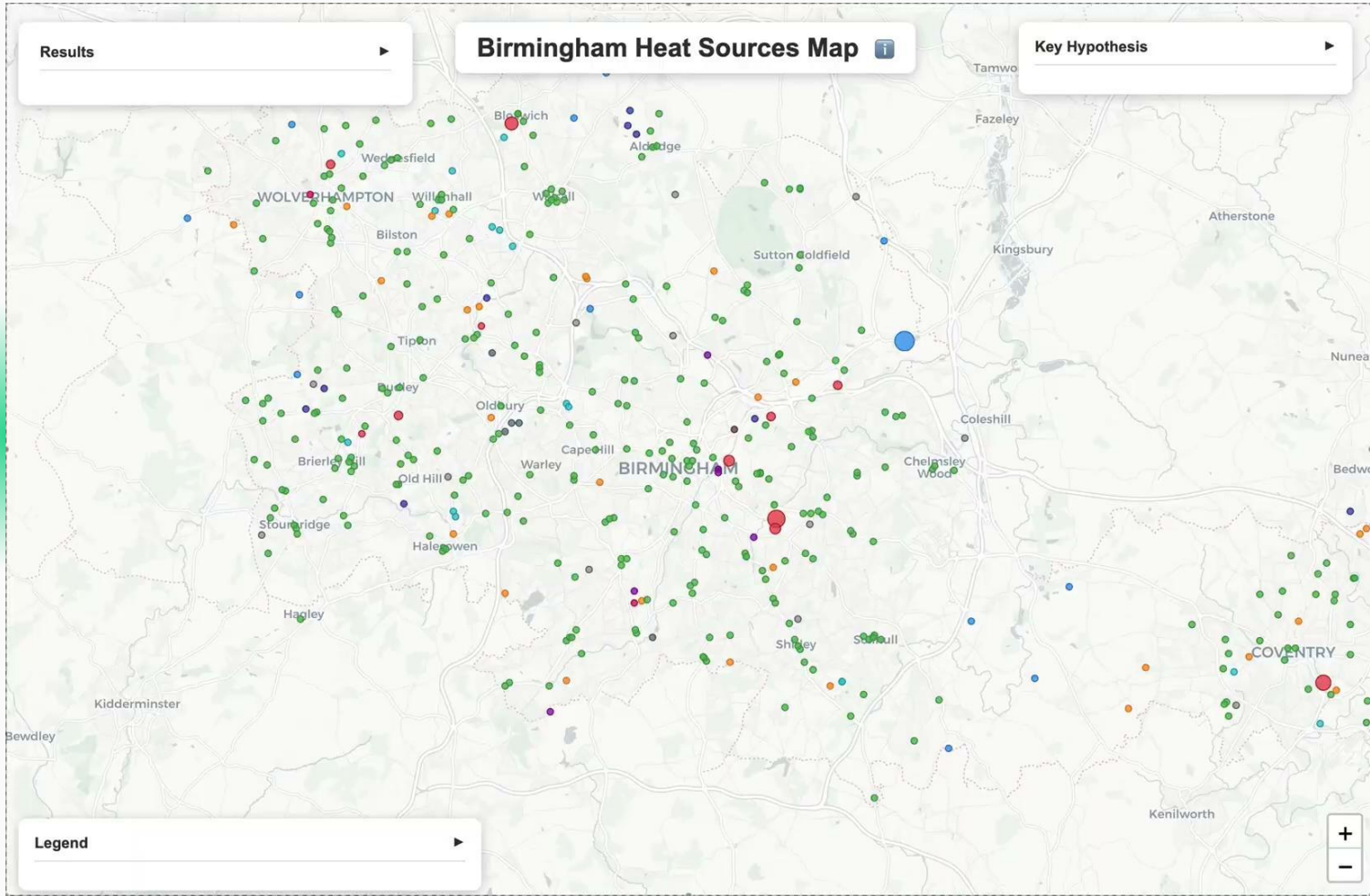
Our contribution : **technical support for the web service**



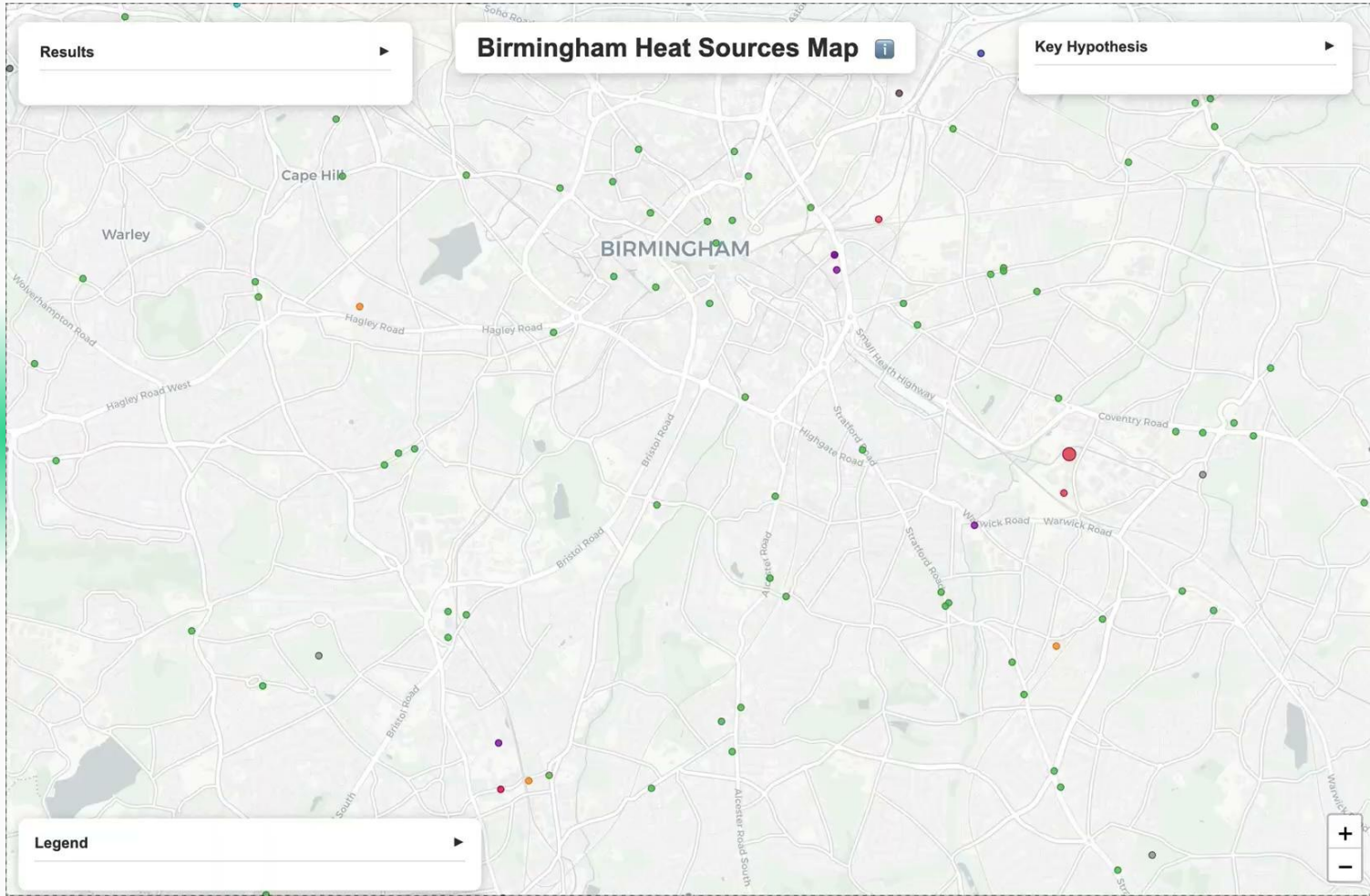
**SKILLED
MAPPING**



Front-end :
a map with
all heat
sources



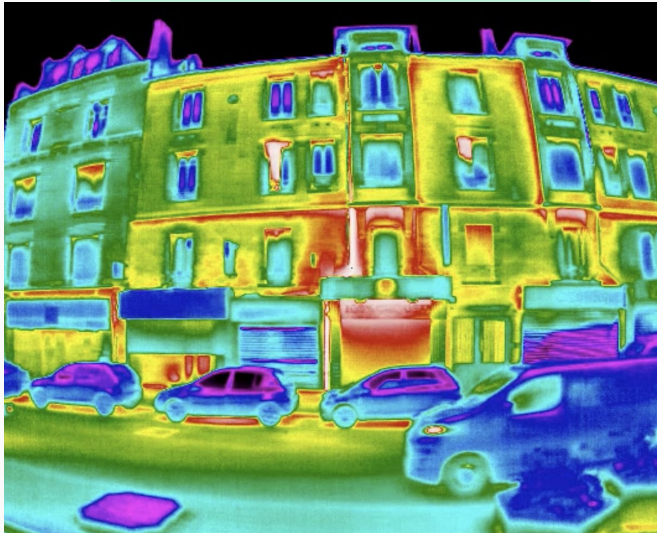
Back-end :
an excel file
with all
calculations
and
hypothesis



Bonus feature : a ready-to-use tool for better planning

OUR CONTRIBUTIONS

Prioritising urban renovations



Largest developer in France
3 communes in Île de France

(Confidential)

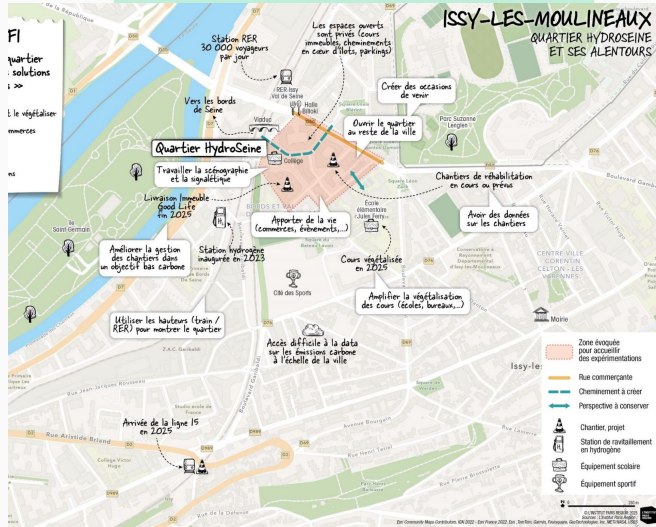
Objective :

Identify renovation priorities for cities to better inform decision-makers.

Accelerate local energy transitions



Local government in the context of Quartiers Métropolitains d'Innovation competition



Objective :

Encourage thermal renovations to reduce energy consumption and accelerate the transition to low-carbon energy sources.

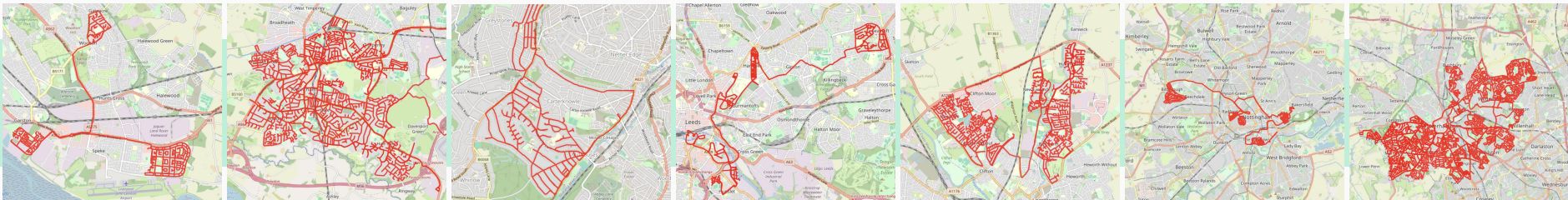
Our best dataset for research

Liverpool

Sheffield

York

Wolverhampton



Manchester

Leeds

Nottingham

KEY LEARNING ECO4

ECO 4 insulation fails



Example 2, Nottingham

- Benefited from ECO4 to insulate the walls
 - Cavity wall, filled cavity
 - Natural ventilation
- Issues detected
 - **Damp**
 - **Wall insulation failure**

Energy rating

B

CONTACT

contact@skilledmapping.com